



MATSIMELASPA



aloe facial range

# aloe facial glycerine soap



## ALOE FACIAL GLYCERINE SOAP with activated charcoal

A deep-cleansing facial bar formulated with Activated Charcoal, Aloe Vera and soothing botanical extracts to draw out impurities, refresh the skin and support a clearer, more balanced complexion.

This multi-benefit cleanser combines gentle foaming agents with natural detoxifying and calming ingredients to effectively cleanse the skin without over-drying. Ideal for combination and oily skin types prone to breakouts.

### Why you'll love it:

**Activated Charcoal** - A powerful purifying agent that binds to toxins, dirt, excess oil and pollutants to help unclog pores and reduce breakouts. It supports a clearer, more refined complexion.

**Aloe Barbadensis (Aloe Vera) Leaf Juice** - Rich in vitamins A, B, C, and E, Aloe helps calm inflammation, hydrate the skin and support healing. Its antioxidant properties also combat signs of environmental damage and premature aging.

**Calendula Officinalis Flower Extract** - Known for its skin-soothing and anti-inflammatory properties. Supports skin repair, reduces irritation and helps treat minor skin issues like dryness, eczema, and redness.

**Salvia Officinalis (Sage) Extract** - Offers antimicrobial and antioxidant benefits thanks to its essential oils and flavonoids. Helps purify the skin and maintain a healthy skin barrier.

**Chamomilla Recutita (Matricaria) Flower Extract** - A gentle botanical extract with calming and anti-inflammatory properties. Promotes skin rejuvenation and is especially beneficial for sensitive or irritated skin.



### How to Use:

Lather the bar in water and apply the foam to damp skin using gentle, circular motions. Rinse thoroughly with water. Use morning and evening as part of your cleansing routine.

### Full Ingredients Listing:

Propylene Glycol, Stearic Acid, Sodium Xylene Sulphonate, Palm Kernel Acid, Sodium Lauryl Ether Sulphate, Glycerine, Sucrose, Sodium Hydroxide, Aqua (Water), Triethanolamine, Calendula Officinalis Flower Extract, Salvia Officinalis (Sage) Extract, Chamomilla Recutita (Matricaria) Flower Extract, Aloe Barbadensis (Aloe) Leaf Juice, Activated Carbon, Salicylic Acid, Ethylenediamine Tetraacetic Acid (EDTA), Parfum (Fragrance)







# aloe facial foaming cleanser

## ALOE FACIAL FOAMING CLEANSER

Say hello to the newest addition to the MatsiMela Aloe Facial Range - our Foaming Cleanser! This lightweight, refreshing foam lifts away impurities while maintaining the skin's natural moisture balance. Perfect for all skin types, it cleanses deeply without stripping hydration.

### Why you'll love it:

**Aloe Vera** - Hydrates, soothes, and nourishes.

**Beetroot Extract (Beta Vulgaris Root Extract)** - A powerful antioxidant that helps combat free radicals. Research suggests that it also has regenerative properties, supporting skin cell renewal and overall skin vitality.

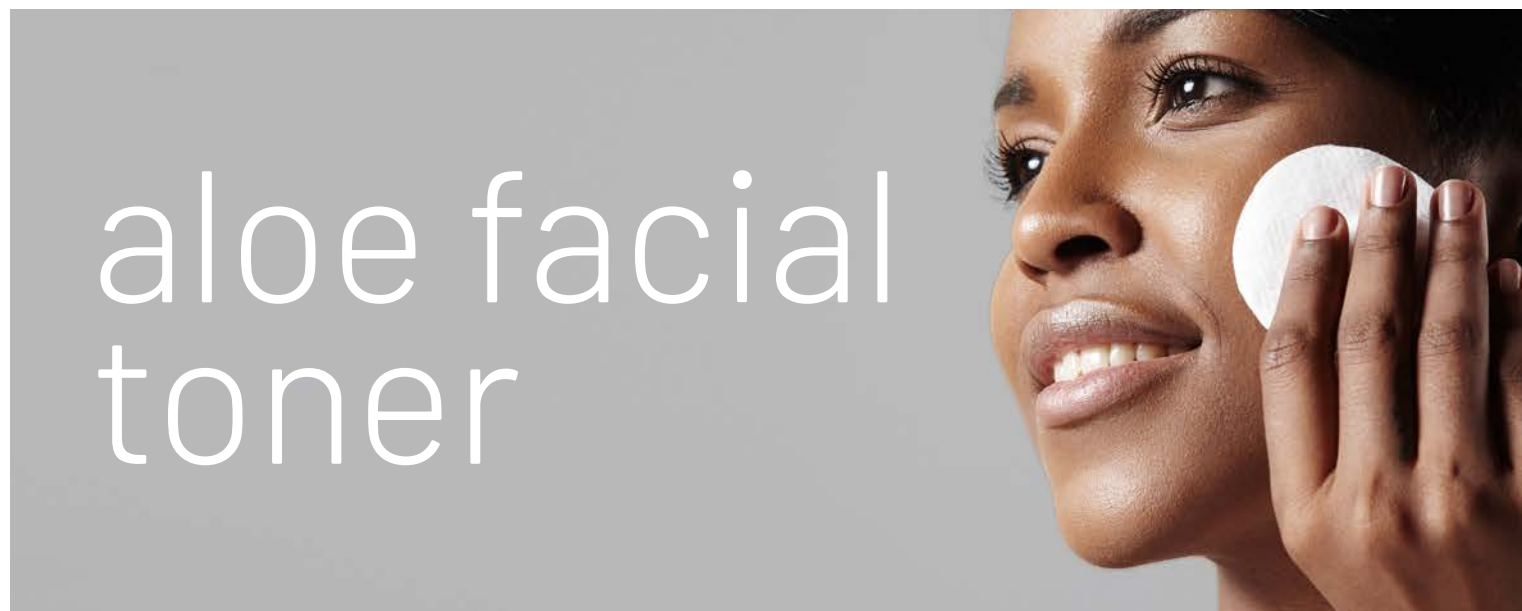
**Fructooligosaccharides** - Promote long-lasting moisture retention, leaving skin soft and supple. These natural prebiotics nourish and support a healthy skin microbiome by feeding probiotics - the "good" bacteria that help maintain microbial balance on the skin's surface. A balanced microbiome leads to healthier, more resilient skin.

### How to Use:

Apply a small amount to damp skin, massage in circular motions to create a gentle lather, and rinse thoroughly with warm water. Use morning and night for refreshed, glowing skin.

### Full Ingredients Listing:

Aqua (Water), Sodium Lauryl Glucamate, Glycerin, Lauryl Glucoside, Cocoamidopropyl Betaine, Aloe Barbadensis Leaf Juice, Fructooligosaccharides, Beta Vulgaris (Beet) Root Extract, Water, Polyquaternium 10, Phenoxyethanol, Ethylhexylglycerin, Parfum (Fragrance), Citric Acid, Disodium EDTA, Hexyl Cinnamal, Limonene, Geraniol, Linalyl Acetate.



# aloe facial toner

## ALOE FACIAL TONER

A refreshing, skin-conditioning toner infused with Aloe Vera and Witch Hazel to tone, soothe and prepare the skin for optimal hydration. Formulated to help remove any remaining impurities after cleansing, this toner gently refines pores and restores the skin's natural balance.

With calming Aloe and purifying Witch Hazel, it refreshes the skin without leaving it feeling stripped or tight.

### Why You'll love it:

**Aloe Barbadensis Leaf Juice** - Soothes, hydrates, and helps reduce irritation with its natural anti-inflammatory properties. Supports skin healing and calms redness.

**Hamamelis Virginiana (Witch Hazel) Leaf Extract** - A natural astringent that tones the skin, reduces excess oil, tightens pores and provides antioxidant and soothing benefits.

### Ideal For:

- All skin types
- Prepping the skin before moisturizer
- Balancing oiliness and calming irritation
- Minimising pore appearance and refreshing the skin

### How to Use:

After cleansing, apply to face and neck using a cotton pad or lightly spritz over your face. Sweep gently over the skin, avoiding the eye area. Use morning and evening before moisturising.

### Full Ingredients Listing:

Aqua (Water), Hamamelis Virginiana (Witch Hazel) Water and Alcohol, Aloe Barbadensis Leaf Juice, Polysorbate 20, Peg-6 Caprylic/ Capric Glycerides, Benzyl Alcohol, Methylchloroisothiazolinone, Methylisothiazolinone, Parfum.





# aloe 2-in-1 facial exfoliating mask



## ALOE 2-IN-1 FACIAL EXFOLIATING MASK

Introducing the latest innovation in the MatsiMela Aloe Facial Range - the 2-in-1 Exfoliating Mask! This powerful yet gentle mask combines deep cleansing with exfoliation to reveal a smoother, brighter complexion. Say goodbye to dull skin and hello to a refreshed, radiant glow!



### Why you'll love it:

#### Kaolin Clay

- Absorbs impurities and excess oil, helping to balance oil production.
- Naturally brightens the complexion by removing dead skin cells and increasing circulation.
- Reduces the look of blackheads and pores by drawing out congestion.
- Provides mild exfoliation to keep skin soft and smooth.
- Supports the skin's microbiome, helping to reduce irritation and redness, making it ideal for sensitive and acne-prone skin.

#### Stearic Acid

- Helps the skin retain moisture for a softer, more supple complexion.
- Strengthens the skin barrier to protect against environmental stressors.
- Acts as a natural emollient, nourishing and softening the skin.
- Exhibits potential anti-inflammatory properties, helping to soothe irritation.
- Possesses antimicrobial properties, contributing to a healthier skin environment.

#### Silica

Provides gentle physical exfoliation, smoothing and renewing skin texture.

#### Tocopheryl Acetate (Vitamin E)

- Has antioxidant properties & protects against oxidative stress.
- Strengthens the skin's immune system.
- Improves skin resilience.
- Helps prevent the formation of age spots.
- Hydrates the stratum corneum for long-lasting moisturisation.
- Promotes collagen and keratin production in the skin.
- Improves skin elasticity.

### How to Use:

Apply an even layer to clean, dry skin. Leave on for 10-15 minutes, then gently massage with damp fingers before rinsing off.

Use 1-2 times per week for best results.

### Full Ingredients Listing:

Aqua (Water), Kaolin, Stearic Acid, Paraffinum Liquidum, Cetostearyl Alcohol, Glycerine, Cetyl Alcohol, Dimethicone, Silica, Propylene Glycol, Phenoxyethanol, Ethylhexylglycerin, Tocopheryl Acetate, Parfum (Fragrance), Triethanolamine, Polyacrylamide, C13-14 Isoparaffin, Laureth-7, Hexyl Cinnamal, Limonene, Geraniol, Linalyl Acetate.







# aloe facial massage cream

## ALOE FACIAL MASSAGE CREAM professional use only

We're delighted to introduce a luxurious addition to our professional facial range - the MatsiMela Aloe Facial Massage Cream.



Formulated exclusively for spa and salon professionals, this nourishing massage cream is enriched with Avocado Oil and Stearic Acid to deeply hydrate and soften the skin during facial treatments. Its silky, smooth texture ensures a relaxing glide that enhances facial massage while delivering skin-loving benefits.

Whether you're performing a classic facial or an advanced treatment, this cream complements your protocol by restoring moisture, soothing dryness and promoting a radiant glow.

### Why you will love it:

**Avocado Oil** - Packed with vitamins and essential fatty acids to nourish and condition.

**Stearic Acid** - Helps seal in moisture and strengthen the skin barrier.

### How to Use:

Apply a small amount to clean, dry skin. Perform your professional massage technique. Wipe away excess or allow to absorb for added hydration.

### Full Ingredients Listing:

Aqua (Water), Stearic Acid, Hydrogenated Polydecene, Vitis Vinifera (Grape) Seed Oil, Propylene Glycol, Dimethicone, Cetyl Alcohol, Glyceryl Stearate, Ceto Stearyl Alcohol, Isopropyl Myristate, Phenoxyethanol, Ethylhexylglycerin, Parfum (Fragrance), Sorbitan Monostearate, Oleth-10, Triethanolamine, Hexyl Cinnamal, Limonene, Geraniol, Linalyl Acetate, Linalool, Coumarin, Eucalyptus Cayophyllus Oil, Pinene, Citronellol



# aloe facial purifying serum

## ALOE FACIAL PURIFYING SERUM

Introducing the latest addition to the MatsiMela Aloe Facial Range – the Aloe Facial Purifying Serum! Designed to target acne-prone and congested skin, this powerful serum helps to unclog pores, reduce breakouts and calm irritation for a clear, balanced complexion.

### Why You'll Love It:

**Salicylic Acid** - A BHA that exfoliates inside pores, reducing blackheads, breakouts, and congestion.

**Tea Tree Oil** - A natural antibacterial ingredient that fights acne-causing bacteria and soothes irritation.

**Aloe Vera** - Hydrates and calms the skin while reducing redness and inflammation.

**Panthenol (Pro-Vitamin B5)** - Supports skin healing, hydration, and soothes sensitive areas.

### How to Use:

Apply a small amount to clean, dry skin, focusing on problem areas. Use morning and night. Follow with your moisturiser and SPF during the day for best results.

Give yourself the gift of clear, balanced skin with this purifying and soothing serum!

### Full Ingredients Listing:

Aqua (Water), Alcohol (Denat), Propylene Glycol, Propane-1,3-diol, Aloe Barbadensis Leaf Juice, Glycerin, Polysorbate 20, Salicylic Acid, Polyquaternium 10, Panthenol, Phenoxyethanol, Ethylhexylglycerin, Parfum (Fragrance), Melaleuca Alternifolia Leaf Oil, Disodium EDTA, Hexyl Cinnamal, Limonene, Geraniol, Linalyl Acetate, Linalool, Coumarin, Eucalyptus Cayophyllus Oil, Pinene, Citronellol.





## ALOE FACIAL MOISTURE & COLLAGEN BOOST SERUM

Say hello to healthy, glowing skin with the latest addition to the MatsiMela Aloe Facial Range - the Facial Moisture & Collagen Boost Serum! Designed to deeply hydrate and enhance elasticity, this serum leaves skin plump, smooth and radiant.

### Why You'll Love It:

**Hyaluronic Acid** – Attracts and retains moisture for long-lasting hydration and a plump appearance.

**Collagen** – Improves skin firmness and elasticity, visibly reducing fine lines.



**Aloe Vera** - Soothes and hydrates with its natural calming and healing properties.

**Moringa Oil** - Nourishes and protects with powerful antioxidants and essential fatty acids.

**Beet Root Extract** - Boosts skin hydration and moisture retention.

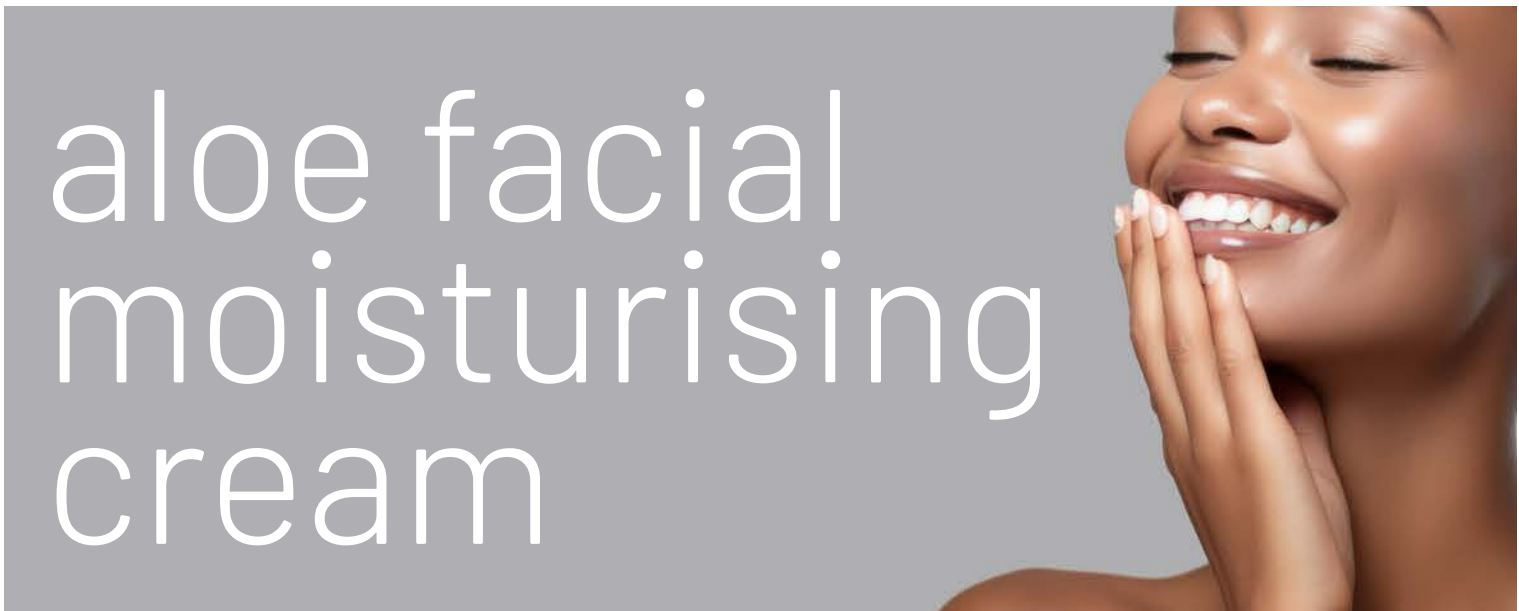
**Prebiotics** - Balances the skin microbiome for a healthy, radiant glow.

### How to Use:

Apply a few drops to clean, dry skin in the morning and evening. Gently massage until fully absorbed. Follow with moisturiser and SPF during the day.

### Full Ingredients Listing:

Aloe Barbadensis Leaf Juice, Glycerin, Moringa Oleifera Seed Oil, Fructooligosaccharides, Beta Vulgaris (Beet) Root Extract, Water, Collagen, Hyaluronic Acid, Parfum (Fragrance), Phenoxyethanol, Ethylhexylglycerin, Hexyl Cinnamal, Limonene, Geraniol, Linalyl Acetate, Linalool, Coumarin, Eucalyptus Cayophyllus Oil, Pinene, Citronellol.



## ALOE FACIAL MOISTURISING CREAM

A lightweight, non-greasy moisturiser specially formulated for normal to combination skin. Enriched with Aloe Vera, Vitamin E, and Pentavitin, this daily hydrator delivers immediate and long-lasting moisture while helping to strengthen and protect the skin barrier. Skin is left soft, supple and comforted with a smooth, healthy-looking finish.

### Why you'll love it:

**Aloe Barbadensis (Aloe Vera Leaf Juice)** - Renowned for its soothing and hydrating properties, Aloe Vera helps calm irritation, support skin repair and enhance moisture retention.

**Tocopheryl Acetate (Vitamin E)** - A powerful antioxidant that helps protect the skin from environmental stressors and supports skin softness and elasticity.

**Saccharide Isomerate (Pentavitin)** - A deeply hydrating, plant-derived complex that binds to the skin for long-lasting moisture - even after rinsing. Clinically proven to:

- Deliver instant hydration
- Provide up to 72-hour moisture
- Improve skin comfort in 2 weeks
- Visibly smooth skin texture in 4 weeks

**Olus Oil** - A hypoallergenic, plant-derived oil that moisturises the skin and prevents moisture loss. Ideal for sensitive skin.

### How to Use:

Apply to cleansed and toned skin. Gently massage a small amount into the face and neck using upward circular movements. Use morning and evening for best results with a suitable serum and SPF during the day.

### Full Ingredient Listing:

Aqua (Water), Coco-Caprylate, Caprate, Glycerin, Glyceryl Stearate, PEG-100 Stearate, Capric, Caprylic Triglyceride, Stearic Acid, Aloe Barbadensis Leaf Juice, Phenoxyethanol, Ethylhexylglycerin, Glyceryl Stearate, Tocopherol Acetate, Saccharide Isomerate, Citric Acid, Sodium Citrate, Parfum(Fragrance)





# aloe SPF30 facial cream



## ALOE SPF30 FACIAL CREAM

We're thrilled to give you an exclusive first look at our latest skincare innovation - the Aloe SPF30 Facial Cream! This lightweight, broad-spectrum sunscreen not only shields your skin from harmful UVA/UVB rays, but also hydrates and nourishes with the power of Aloe Vera and Vitamin E.



This daily-use SPF is the perfect addition to any facial routine - ideal for all skin types and designed to absorb quickly without leaving a greasy residue.

### Why you'll love it:

**Broad-Spectrum SPF30** - Provides effective protection from both UVA and UVB rays.

**Aloe Vera** - Soothes and hydrates, calming skin exposed to the sun.

**Vitamin E** - Powerful antioxidant that fights free radicals and supports skin resilience.

**Lightweight Formula** - Fast-absorbing and perfect for daily wear.

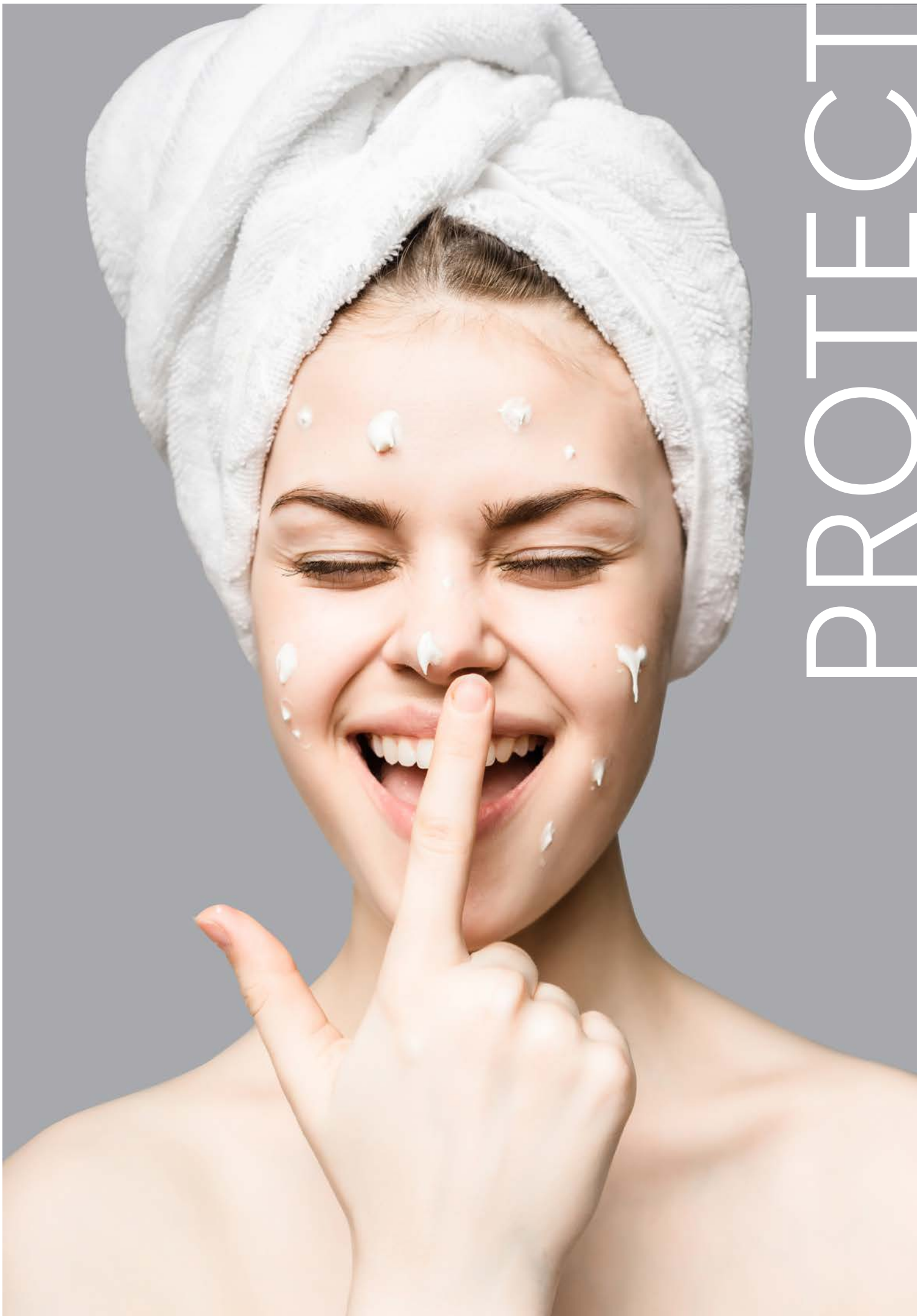
### How to Use:

Apply generously to clean, dry skin at least 15 minutes before sun exposure. Reapply every 2 hours or after swimming, sweating, or towel drying.

Get ready to protect, hydrate and glow with confidence!

### Full Ingredients Listing:

Aqua (Water), Alcohol (Denat), Propylene Glycol, Propane-1,3-diol, Aloe Barbadensis Leaf Juice, Glycerin, Polysorbate 20, Salicylic Acid, Polyquaternium 10, Panthenol, Phenoxyethanol, Ethylhexylglycerin, Parfum (Fragrance), Melaleuca Alternifolia Leaf Oil, Disodium EDTA, Hexyl Cinnamal, Limonene, Geraniol, Linalyl Acetate, Linalool, Coumarin, Eucalyptus Cayophyllus Oil, Pinene, Citronellol.



PROTECT

## CONTACT:



(+27) 11 704 7251



info@matsimela.co.za



40 Homestead Road, Kya Sands, Randburg



www.matsimela.co.za



CONTACT